



## HOLMEWOOD HOUSE SCHOOL

*'Kindness, aspiration & self-belief'*

### PREVENTING RADICALISATION POLICY

<b>Policy Holder</b>	Deputy Head
<b>Date Approved</b>	September 2025
<b>Approval</b>	SLT
<b>Date for next review</b>	September 2026

### RELATED SCHOOL POLICIES

- Acceptable use of the Internet Policy
- Behaviour Policy
- Safeguarding Policy
- Equality, Diversity and Inclusiveness Policy
- PSHE Policy
- SMSC Policy
- Staff Code of Conduct
- Teaching and Learning Policy
- Whistleblowing Policy

### BACKGROUND

Preventing radicalisation is part of our commitment to keeping children safe. Since the 'Education and Inspections Act 2006' all schools have a duty to promote community cohesion. Over the last few years global events have led to a growth in extremist viewpoints, including advocacy of violent extremism.

Schools have an important part to play in both educating children and young people about extremism and recognising when pupils start to become radicalised. In July 2015, new statutory duties were placed on schools under section 26 of the Counter-Terrorism and Security Act, (2015) which require schools 'to have due regard to the need to prevent people from being drawn into terrorism'. Safeguarding children from all risks of harm is an important part of a school's work and protecting them from extremism is one aspect of that.

### ETHOS

*This policy applies to the whole school including Boarding*

*Preventing Radicalisation Policy September 2025*

At Holmewood House, we ensure that through our school vision, values, rules, diverse curriculum and teaching we promote tolerance and respect for all cultures, faiths and lifestyles. As part of their responsibility for monitoring safeguarding, the governing body also ensures that this ethos is reflected and implemented effectively in school policy and practice and that there are effective risk assessments in place to safeguard and promote pupils' welfare.

We have a duty to prepare our children for life in modern Britain and to keep them safe. Pupils have the right to learn in safety. We actively promote equality, do not tolerate bullying of any kind and will challenge derogatory language and behaviour towards others.

## **RISK ASSESSMENT**

We assess the risk of radicalisation to be low.

As part of our annual safeguarding review, we carry out risk assessment which will look at the general risks affecting children and young people in the local area and the specific risks which may affect groups or individuals within the school. As part of this process we will consider measures necessary to mitigate and manage these risks.

## **STATUTORY DUTIES**

The duty to prevent children and young people from being radicalised is set out in the following documents.

- Counter Terrorism and Security Act (2015)
- Keeping Children Safe in Education (2022)
- Prevent Duty Guidance (March 2015)
- Working together to Safeguard Children
- The use of social media for on-line radicalisation (July 2015)

## **RELATED SCHOOL POLICIES**

- Acceptable use of the Internet Policy
- Behaviour Policy
- Safeguarding Policy
- Equality, Diversity and Inclusiveness Policy
- PSHE Policy
- SMSC Policy
- Staff Code of Conduct
- Teaching and Learning Policy
- Whistleblowing Policy

## **DEFINITIONS**

**Extremism** is defined as vocal or active opposition to fundamental British values, including democracy, the rule of law, individual liberty and mutual respect and tolerance of different faiths and beliefs. We also include in our definition of extremism calls for the death of members of our armed forces, whether in this country or overseas.

**Radicalisation** refers to the process by which a person comes to support terrorism and extremist ideologies associated with terrorist groups.

**British Values** are democracy, the rule of law, individual liberty and mutual respect and tolerance of those with different faiths and beliefs.

## **ROLES AND RESPONSIBILITIES**

### **Role of the Board of Governors**

The Board of Governors has a responsibility to ensure that the school meets its statutory duties with regard to preventing radicalisation. The Board has a nominated Safeguarding Governor, who will liaise with the Designated Safeguarding Lead, Headmaster and other staff about issues to do with protecting children from radicalisation.

### **Role of the Head**

It is the role of the Head to:

- ensure that this policy is understood and effectively implemented by staff throughout the school
- ensure that the DSL undergoes appropriate and regular Prevent duty training
- ensure that the school's curriculum addresses the issues involved in radicalisation
- ensure that staff conduct is consistent with preventing radicalisation.

### **Role of Designated Safeguarding Lead**

It is the role of the Designated Safeguarding Lead Team to:

- ensure that staff understand the issues of radicalisation, are able to recognise the signs of vulnerability or radicalisation and know how to refer their concerns
- receive safeguarding concerns about children and young people who may be vulnerable
- undertake Prevent awareness training such as the on-line general awareness training [http://course.ncalt.com/Channel\\_General\\_Awareness/01/index.html](http://course.ncalt.com/Channel_General_Awareness/01/index.html)
- make referrals to appropriate agencies with regard to concerns about radicalisation
- liaise with the local authority, and the police, and follow any locally agreed procedures: [Nick.Wilkinson@kent.gov.uk](mailto:Nick.Wilkinson@kent.gov.uk), Prevent and Channel Strategic Manager - Social Care, Health and Wellbeing.
- report to the governing body on these matters

### **Role of Staff**

- understand the issues of radicalisation and know how to refer their concerns
- undergo regular Prevent Duty training which equips staff with the knowledge and confidence to spot signs affect pupils at school  
[http://course.ncalt.com/Channel\\_General\\_Awareness/01/index.html](http://course.ncalt.com/Channel_General_Awareness/01/index.html)  
<https://www.myeducare.com/totara/dashboard/index.php>
- be alert to changes in children's behaviour which could indicate that they may be in need of help or protection

- use their professional judgement in identifying children who might be at risk of radicalisation and act proportionately

## **CURRICULUM**

We are committed to ensuring that our pupils are offered a broad and balanced curriculum that aims to prepare them for life in modern Britain. We encourage our pupils to be inquisitive learners who are open to new experiences and tolerant of others.

Our values support the development of the whole child as a reflective learner within a calm, caring, happy and purposeful atmosphere. Teaching the school's core values alongside the fundamental British values supports quality teaching and learning, whilst making a positive contribution to the development of a fair, just and civil society.

We aim to provide a safe space in which pupils can understand the risks associated with terrorism and develop the knowledge, skills and confidence to be able to challenge extremist views.

We include opportunities in the curriculum for pupils to build resilience to pressure and to develop the skills they need to recognise and stay safe from abuse and radicalisation. In particular,

- PHSE lessons are used alongside assemblies and form periods to teach pupils how to understand, manage risks, resist pressure and make safer choices and seek help if necessary
- By promoting British values such as tolerance, respect and understanding of others through citizenship
- Through Theology, Philosophy and Religious Studies, and other relevant subjects with focus on democracy, diversity, mutual respect and managing debates around contentious issues.

## **INTERNET SAFETY, FILTERING AND MONITORING**

The internet provides children and young people with access to a wide-range of content, some of which is harmful. Extremists use the internet, including social media, to share their messages.

The filtering systems used in our school block inappropriate content, including extremist content. Our robust filtering and monitoring system alerts staff to the possibility of inappropriate content being accessed and/or viewed. The Lead DSL has overall responsibility for ensuring daily checks of the system. Each trigger of the system is followed up with either the pupil or staff member concerned.

Pupils are taught how to stay safe online, both in and outside school. They are taught to understand the potential risks posed by adults or young people who use the internet and social media to groom, abuse or radicalise other people, especially young people and vulnerable adults.

Should staff, pupils or visitors find unblocked extremist/inappropriate content they must report it to the DSL who will deal with it as a safeguarding matter.

## **STAFF TRAINING AND INDUCTION**

Staff are given training to help them understand the issues of radicalisation, are able to recognise the signs of vulnerability or radicalisation and know how to refer their concerns. This information also

*This policy applies to the whole school including Boarding*

*Preventing Radicalisation Policy September 2025*

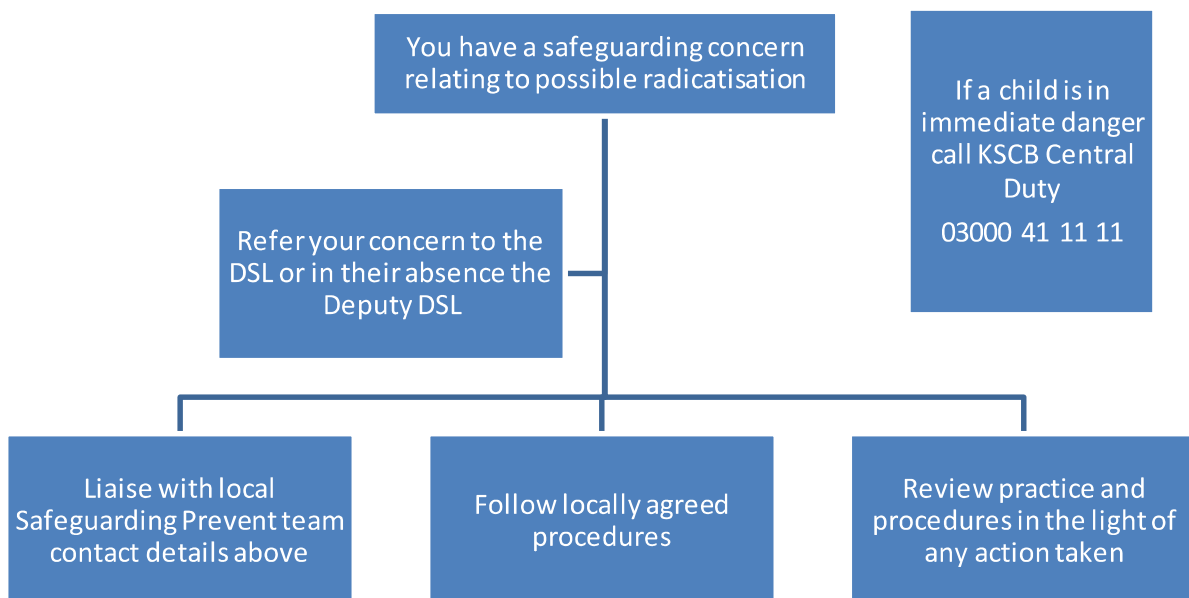
forms part of induction safeguarding training. Staff are updated as necessary in weekly briefings. Further information and training can be found at the Kent Safeguarding Children Board website:

<http://www.kelsi.org.uk/support-for-children-and-young-people/child-protection-and-safeguarding/prevent-within-schools>

In January 2016 the Home office and DfE introduced a website called 'Educate Against Hate' which is aimed at parents, teachers and school leaders to bring together the information and advice surrounding the Prevent Strategy. This includes information from Childnet, NSPCC, Internet Matters and Safer Internet Centre. The website can be found at:

<http://www.educateagainsthate.com/>

## RAISING A CONCERN - PROCEDURE



## SAFER RECRUITMENT

We ensure that the staff we appoint to the school are suitable. Our recruitment procedures are rigorous and we follow the statutory guidance published in Keeping Children Safe in Education. Vetting and barring checks are undertaken on relevant people, including governors and volunteers.

## VISITING SPEAKERS AND VISITORS TO THE SCHOOL

Visitors to the school are made aware of our safeguarding and child protection policies and are given information about what to do if they are concerned about any aspect of child welfare. They are asked to read the summary safeguarding information sheet when they sign in at reception and collect their visitor's badge.

*This policy applies to the whole school including Boarding*

*Preventing Radicalisation Policy September 2025*

The DSL has responsibility for ensuring all visitors and visiting speakers are suitable and appropriately supervised. Where appropriate the DSL will make enquiries/internet searches against the individual's name.

On the rare occasion that a visitor or visiting speaker will have unsupervised access to pupils they will need to be DBS checked.

## **SIGNS OF VULNERABILITY**

There are no known definitive indicators that a young person is vulnerable to radicalisation, but there are a number of signs that together increase the risk. Signs of vulnerability include:

- underachievement
- being in possession of extremist literature
- poverty
- social exclusion
- traumatic events
- global or national events
- religious conversion
- change in behaviour
- extremist influences
- conflict with family over lifestyle
- confused identity
- victim or witness to race or hate crimes
- rejection by peers, family, social groups or faith

## **RECOGNISING EXTREMISM**

As part of our wider safeguarding responsibilities we will be alert to early indicators of radicalisation or extremism which may include:

- showing sympathy for extremist causes
- glorifying violence, especially to other faiths or cultures
- making remarks or comments about being at extremist events or rallies
- evidence of possessing illegal or extremist literature
- advocating messages similar to illegal organisations or other extremist groups
- out of character changes in dress, behaviour and peer relationships (but there are also very powerful narratives, programs and networks that young people can come across online so involvement with particular groups may not be apparent)
- secretive behaviour
- online searching or sharing extremist messages or social profiles
- intolerance of difference, including faith, culture, gender, race or sexuality
- graffiti, art work or writing that displays extremist themes
- attempts to impose extremist views or practices on others
- verbalizing anti-Western or anti-British views
- advocating violence towards others

## **REFERRAL PROCESS**

Staff and visitors to the school must refer all concerns about children and young people who show signs of vulnerability or radicalisation must be passed to the DSL using the usual methods for reporting other safeguarding concerns.

When there are significant concerns about a pupil, the Designated Safeguarding Lead in liaison with the Head will make a referral to the Central Referral Unit (CRU) 03000 41 11 11

See Appendix I for a list of contact details for referring concerns and a flowchart outlining the process for referral or raising a concern.

## **CHANNEL**

Channel is a programme which focuses on providing support at an early stage to people who are identified as being vulnerable to being drawn into terrorism. It provides a mechanism for schools to make referrals if they are concerned that an individual might be vulnerable to radicalisation. An individual's engagement with the programme is entirely voluntary at all stages. Local authorities are under obligation from Section 36 of the CTSA 2015 to ensure Channel panels are in place. Section 38 of the CTSA 2015 requires partners of the panels, including independent schools, to co-operate within the carrying out of its functions and with the police in providing information about a referred individual.

Further guidance in respect of the Channel programme can be found at:

<https://www.gov.uk/government/publications/channel-guidance>

## **MONITORING AND REVIEW**

This policy will be monitored by the governing body at least annually via a report from the Designated Safeguarding Lead.

## APPENDIX I

<b>Key Staff</b>	
Head	Ruth O'Sullivan
Designated Safeguarding Lead	Simon Porter
Deputy Designated Safeguarding Lead	Kevin O'Riordan
Deputy Designated Safeguarding Lead Pre Prep including EYFS	Antoinette Faure
Deputy Designated Safeguarding Lead Boarding	Caolan Wukics
Safeguarding Governor	Alex Patton
Online Safety Governor	Alex Patton

<b>Local Authority Contacts</b>	
Local Safeguarding Children Board (LSCB)	Kent: Claire Ray Principal Officer Office: 03000 415788 <a href="mailto:Claire.ray@kent.gov.uk">Claire.ray@kent.gov.uk</a>
West Kent LSCB	Gemma Wilson Office: 03000 412284
Local Authority (Kent) Designated Officer	Tel: 03000 410888
Local Authority Prevent Lead	<a href="mailto:nick.wilkinson@kent.gov.uk">nick.wilkinson@kent.gov.uk</a>

<b>National Contacts</b>	
NSPCC 24/7 Helpline/textline	Tel: 0808 800 5000/88858 Email: <a href="mailto:help@nspcc.org.uk">help@nspcc.org.uk</a>
DfE Prevent helpline for schools and parents	Tel: 020 7340 7264 (non-emergency) Email: <a href="mailto:counter.extremism@education.gsi.gov.uk">counter.extremism@education.gsi.gov.uk</a>
The Lucy Faithfull Foundation (LFF)	Tel: 0800 1000 900 Email: <a href="mailto:help@stopitnow.org.uk">help@stopitnow.org.uk</a> <a href="http://www.parentsprotect.co.uk">www.parentsprotect.co.uk</a>
National Bullying Helpline	Tel: 0845 22 55 787